

ASME BPE Reducering Excentrisk med 1 st. TC

ASME BPE är en standard för Farmaceutisk, bioteknisk och andra industrier med hygienkrav.

DB0987
140211

Rör i ASME BPE standard, i Syrafast AISI 316L stål.

Materialcertifikat enligt EN 10204-3.1B

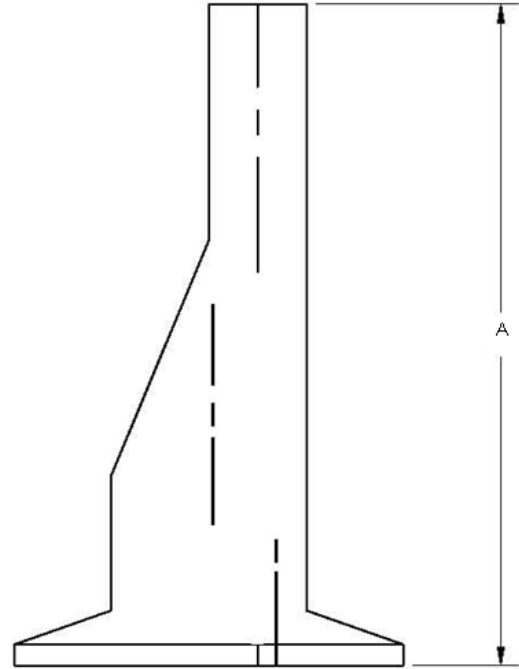
Ytfinhet enligt tabell nedan

Reducerande Excentrisk med 1 st. TC sände, TL32M (2009) (BPE# DT-4.1,3-2(a))

Rör YD Tum	A Tum		Artikelnummer - *
3/4" x 1/2"	3"		60735-*
1" x 1/2"	3-1/2"		60736-*
1" x 3/4"	3"		60737-*
1-1/2" x 1/2"	•		60738-*
1-1/2" x 3/4"	4"		60739-*
1-1/2" x 1"	4"		60740-*
2" x 1/2"	•		60741-*
2" x 3/4"	•		60742-*
2" x 1"	6"		60743-*
2" x 1-1/2"	4"		60744-*
2-1/2" x 1/2"	•		60745-*
2-1/2" x 3/4"	•		60746-*
2-1/2" x 1"	•		60747-*
2-1/2" x 1-1/2"	6"		60748-*
2-1/2" x 2"	4-1/4"		60749-*
3" x 1"	•		60750-*
3" x 1-1/2"	8"		60751-*
3" x 2"	6-1/4"		60752-*
3" x 2-1/2"	4-1/4"		60753-*
4" x 1"	•		60754-*
4" x 1-1/2"	•		60755-*
4" x 2"	10-3/8"		60756-*
4" x 2-1/2"	8-3/8"		60757-*
4" x 3"	6-3/8"		60758-*
6" x 4"	9"		60760-*

* = Finns inte i ASME BPE. Ring för dimension.

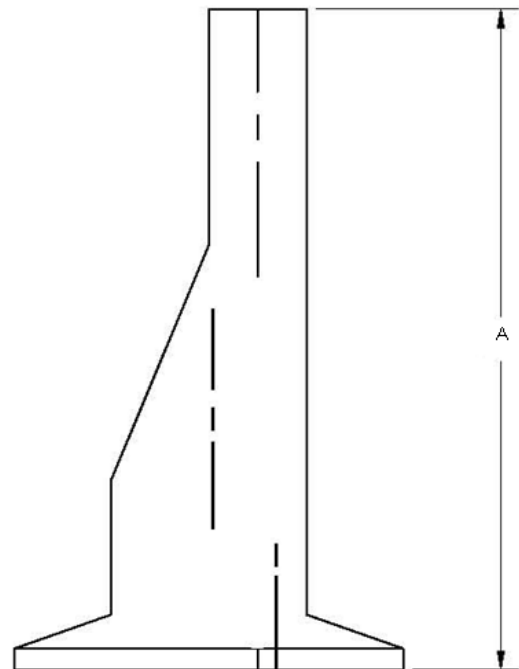
För andra dimensioner, kontakta Saniflex



Reducerande Excentrisk med 1 st. TC sände, TL32M (2012) (BPE# DT-4.1,3-2(b))

Rör YD Tum	A Tum		Artikelnummer - *
3/4" x 1/2"	2-5/8"		60735N-*
1" x 1/2"	3"		60736N-*
1" x 3/4"	2-5/8"		60737N-*
1-1/2" x 3/4"	3-1/2"		60739N-*
1-1/2" x 1"	3"		60740N-*
2" x 1"	3-7/8"		60743N-*
2" x 1-1/2"	3"		60744N-*
2-1/2" x 1-1/2"	3-7/8"		60748N-*
2-1/2" x 2"	3"		60749N-*
3" x 1-1/2"	4-3/4"		60751N-*
3" x 2"	3-7/8"		60752N-*
3" x 2-1/2"	3-1/8"		60753N-*
4" x 2"	5-3/4"		60756N-*
4" x 2 1/2"	4-7/8"		60757N-*
4" x 3"	4-1/2"		60758N-*
6" x 3"	8"		60759N-*
6" x 4"	6-3/8"		60760N-*

För 1" TC enligt A typ eller andra dimensioner, kontakta saniflex



Ytfinish	ID		YD		Tillägg *
	µm	Polering	µm	Polering	
SF1	0,51	Mekanisk	opolerad	-	-3
SF1	0,51	Mekanisk	0,81	Mekanisk	-7
SF4	0,38	Elektropol.	opolerad	-	-3EP
SF4	0,38	Elektropol.	0,81	Mekanisk	-7EP

Andra ytfinheter kan ordnas mot kundspecifikationer.

saniflex ab