

ASME BPE T - Stycke Reducerande med svetsändar

ASME BPE är en standard för Farmaceutisk, bioteknisk och andra industrier med hygienkrav.

DB0933
140211

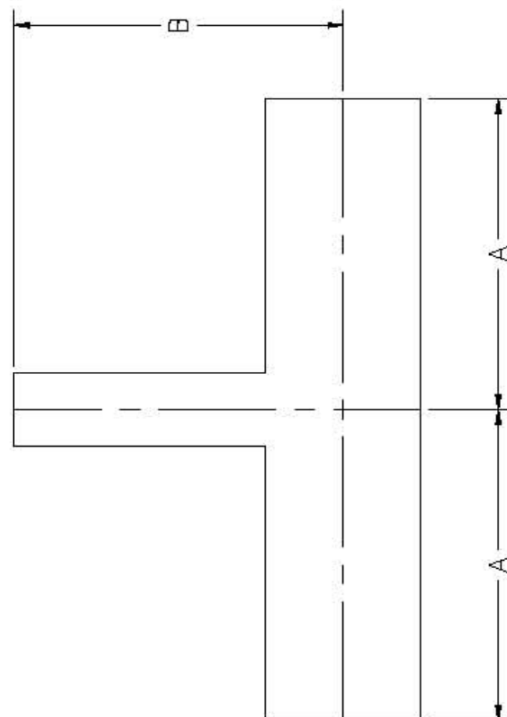
Rör i ASME BPE standard, i Syrafast AISI 316L stål.

Materialcertifikat enligt EN 10204-3.1B

Ytfinhet enligt tabell nedan

T-stycke, reducerande med svetsändar, TL7RWWW (BPE# DT-4.1.2-6)

Rör YD Tum	A Tum	B Tum		Artikelnummer - *
3/4" x 1/2"	2"	2"		60450.*
1" x 1/2"	2-1/8"	2-1/8"		60451.*
1" x 3/4"	2-1/8"	2-1/8"		60452.*
1-1/2" x 1/2"	2-3/8"	2-3/8"		60453.*
1-1/2" x 3/4"	2-3/8"	2-3/8"		60454.*
1-1/2" x 1"	2-3/8"	2-3/8"		60455.*
2" x 1/2"	2-7/8"	2-5/8"		60456.*
2" x 3/4"	2-7/8"	2-5/8"		60457.*
2" x 1"	2-7/8"	2-5/8"		60458.*
2" x 1-1/2"	2-7/8"	2-5/8"		60459.*
2-1/2" x 1/2"	3-1/8"	2-7/8"		60460.*
2-1/2" x 3/4"	3-1/8"	2-7/8"		60461.*
2-1/2" x 1"	3-1/8"	2-7/8"		60462.*
2-1/2" x 1 1/2"	3-1/8"	2-7/8"		60463.*
2-1/2" x 2"	3-1/8"	2-7/8"		60464.*
3" x 1/2"	3-3/8"	3-1/8"		60465.*
3" x 3/4"	3-3/8"	3-1/8"		60466.*
3" x 1"	3-3/8"	3-1/8"		60467.*
3" x 1-1/2"	3-3/8"	3-1/8"		60468.*
3" x 2"	3-3/8"	3-1/8"		60469.*
3" x 2-1/2"	3-3/8"	3-1/8"		60470.*
4" x 1/2"	4-1/8"	3-5/8"		60471.*
4" x 3/4"	4-1/8"	3-5/8"		60472.*
4" x 1"	4-1/8"	3-5/8"		60473.*
4" x 1-1/2"	4-1/8"	3-5/8"		60474.*
4" x 2"	4-1/8"	3-5/8"		60475.*
4" x 2-1/2"	4-1/8"	3-5/8"		60476.*
4" x 3"	4-1/8"	3-5/8"		60477.*
6" x 4"	5-5/8"	5-1/8"		60478.*



För andra dimensioner, kontakta Saniflex

Ytfinish	ID		YD		Tillägg *
	µm	Polering	µm	Polering	
SF1	0,51	Mekanisk	opolerad	-	-3
SF1	0,51	Mekanisk	0,81	Mekanisk	-7
SF4	0,38	Elektropol.	opolerad	-	-3EP
SF4	0,38	Elektropol.	0,81	Mekanisk	-7EP

Andra ytfinheter kan ordnas mot kundspecifikationer.